

PROTECTIVE COATINGS
solutions that cover your needs



SIGMA *Weld*

Weldable Primer Range

The Sigma Weldable

SigmaKalon Marine and Protective Coatings is dedicated to the development, manufacture and supply of coatings to meet the very challenging needs of specific industries.

With a heritage of outstanding expertise in coatings technology and decades of international investments in research and development for the protective coatings market, no company could be better placed than SigmaKalon Marine and Protective Coatings to meet the fast-changing global challenges of this technically demanding sector.

SigmaKalon offers a full range of pre-fabrication primers (shopprimers) for the temporary protection of the steel during cutting, welding and transportation.

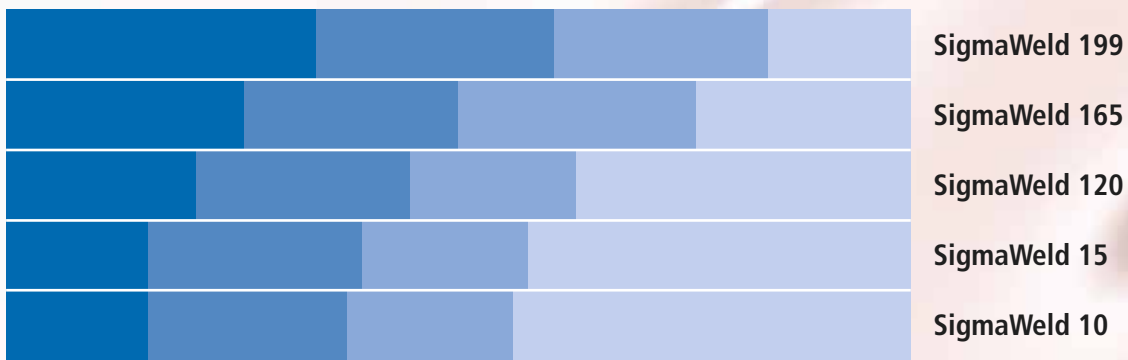
All pre-fabrication primers could be part of the total paint system under atmospheric and/or immersed conditions.

The SigmaWeld range includes several technologies, like epoxy, alkyd and zinc ethyl silicates.

The latest development within the SigmaWeld range is the introduction of a water based Acrylic pre-fabrication primer which can be used on an automatic production line.



Primer Range



■ Welding properties ■ Anti-corrosive properties ■ Application window ■ Ease of application



SigmaWeld



SigmaWeld 199

A two-component moisture curing low zinc (ethyl) silicate pre-fabrication primer.

- Low zinc
- Excellent anti-corrosive properties
- Suitable for immersed conditions
- Welding certificates (including Lloyd's Register of Shipping)
- Excellent cutting and welding properties including MIG/MAG
- Provides regular, smooth weld seams

SigmaWeld 165

A two-component moisture curing higher zinc (ethyl) silicate pre-fabrication primer.

- Excellent anti-corrosive properties
- Suitable for immersed conditions
- Balanced zinc level
- Good cutting and welding properties including MIG/MAG
- Approved by Lloyd's register of shipping

SigmaWeld 120

A two-component polyamide cured epoxy pre-fabrication primer.

- Good anti-corrosive properties
- Suitable for atmospheric conditions
- Suitable for automatic application
- Fast drying
- Good cutting and welding properties including MMA and gravity welding



Range

SigmaWeld 15

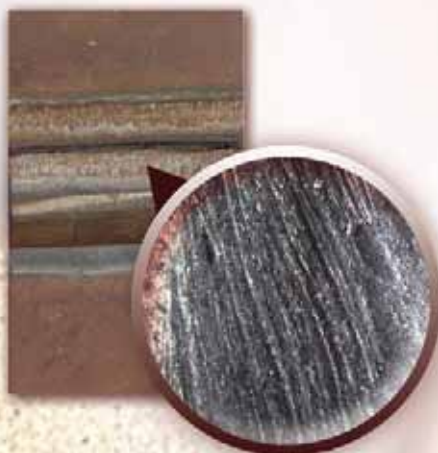
A one component alkyd based anti-corrosive pre-fabrication primer.

- Suitable for atmospheric conditions
- User friendly
- Fast drying
- Good cutting and welding properties with electrode welding
- Suitable for automatic application

SigmaWeld 10

A one-component water based anti-corrosive pre-fabrication primer.

- Water based
- Suitable for an automatic production line
- Suitable for atmospheric conditions
- Fast drying
- User friendly
- Good cutting and welding properties with electrode welding



- Fracture of weld seam with SigmaWeld 199



- Fracture of weld seam without suitable welding primer



SigmaWeld applications

The SigmaWeld range is widely used and respected in all key industry sectors, meeting the very demanding challenges required to protect major assets.

Infrastructure

- Bridges
- Port and harbour structures
- Tanks
- Stadiums and airports

Petrochemical

- Land storage tanks
- Waste water facilities
- Pipelines

Offshore

- Drinking water tanks
- Slop tanks
- Pipelines

Power

- Storage tanks
- Waste water facility

Performance you can trust

All our coatings are manufactured to world-leading standards. So you can rely on a consistent performance from each and every coating in the SigmaWeld range.



The SigmaWeld Range

SigmaWeld 199 (*SigmaWeld MC*)

- Two component ethyl silicate pre-fabrication primer

SigmaWeld 165 (*Sigma Proferral MC*)

- Two component ethyl silicate pre-fabrication primer

SigmaWeld 120 (*Sigmaweld EP Shopprimer*)

- Two component epoxy based pre-fabrication primer

SigmaWeld 15 (*Sigmasteel Shopprimer*)

- One component alkyd based pre-fabrication primer

SigmaWeld 10 (*Sigmetal Shopprimer*)

- One component water based pre-fabrication primer



SigmaKalon Marine and Protective Coatings

SigmaKalon Marine and Protective Coatings brings unrivalled levels of experience and expertise in coatings technology through our expanding global supply and distributor network. We understand our customer needs and the challenges they face and respond quickly with effective economic solutions, working closely to develop the products they need.

Formulations that can be applied more easily, resist the elements better and reduce overall environmental impact in compliance with both local and international standards.

With in-depth knowledge of the working realities facing the industries we supply, our Technical Service Representatives offer an unsurpassed perspective on the coatings options that can help your industry to function optimally, maximising technical performance and minimising expensive down time.



SigmaKalon Marine & Protective Coatings B.V.
P.O. Box 58034, 1040 HA Amsterdam, The Netherlands
Tel: +31 (0)20 407 5050, Fax: +31 (0)20 407 5059
Email: sigma.protectivecoatings@sigmakalon.com
Website: www.sigmacoatings.com/protective



Your Favourite
Coatings Company

